

2020

ANY GIVEN CHILD STATUS REPORT

PREPARED BY

DR. JEFFREY LEFFLER, ANY GIVEN CHILD
LIAISON AND ASSISTANT PROFESSOR, MSU

TRACY SCOTT, MERIDIAN PUBLIC SCHOOL
DISTRICT ARTS COORDINATOR

TIFFANY MCGEHEE, OUTREACH DIRECTOR,
MSU RILEY CENTER



MERIDIAN
PUBLIC SCHOOL DISTRICT

Ensuring the Arts for
ANY GIVEN CHILD
Meridian



A KC Education Program

The
Phil Hardin
FOUNDATION

www.anygivenchildmeridian.org
agcmeridian2017@gmail.com



A NOTE FROM DR. AMY CARTER

From improved academic outcomes to the reduction in our chronic absentee rates and discipline referrals to the office, Any Given Child practices are shifting the way we do education in MPSD. Students and the educators who serve them are embracing the impact that the arts can have on student engagement and learning experiences in Meridian. I witnessed first hand the impact AGC is having on teacher practice and student learning.

I was conducting an unannounced visit to Crestwood Elementary School in the Spring of 2019. I walked into Mrs. Tori Johnson's classroom, a third grade teacher at Crestwood, who participated in the Acting Right training (drama). Immediately I witnessed the teacher remind students to take ownership of their bodies and continue their task while the teacher took a moment to speak with me. I asked her to continue as if I was not present and proceeded to speak with a few student groups. The students explained that their teacher had taught them how to be in control of their bodies and their choices which leads to them becoming the examples of leadership that we expect in the school district. I was amazed at how the students took ownership of their learning and group tasks while working to assist others.

The arts helped me find my voice as a student. Growing up I was very shy and didn't know the power of voice and the hidden talent I possessed and how that talent would later impact so many others. My high school drama teacher/English teacher encouraged me to consider a role in a play. Although I was hesitant, I nervously auditioned and months later I was performing monologues in statewide competitions in front of large audiences. The level of confidence and joy that I felt from that day forward has driven my passion to help our educators in my school district find their power of influence while helping their students find their voice and hidden talent.

Dr. Amy J. Carter
Superintendent
Meridian Public School District



A NOTE FROM OUR AGC LIAISON

It continues to be my great privilege to serve as the liaison to the John F. Kennedy Center for the Performing Arts representing Any Given Child Meridian. While the COVID-19 pandemic has certainly created many challenges, our community has continued in our commitment to ensuring access and equity in the arts for every child in Meridian. As you review this report of our efforts and accomplishments during this unprecedented year, please know that quality arts integrated teaching and learning is only more important as we move forward. The evidence is clear that integrating the arts in instruction will enhance the learning outcomes of our students and help them to overcome any deficits they may have experienced due to lack of access to educational experiences during the pandemic.

As I mentioned before, we made necessary adjustments to continue the work of AGC Meridian. We were fortunate that many of our planned activities including arts-integrated field trips that would not have been possible during the pandemic occurred before schools were closed at spring break. As children did not have access to their school facilities, we were able to connect with community partners to take the arts to the children. Thanks to the support of the Mississippi Arts and Entertainment Experience, we were able to have a socially-distanced summer training for teachers in their spacious facility. We also planned and recruited for our inaugural arts integration cohort. This specialized program provides intensive training in arts integration for teachers who will then serve as role models in their buildings and has been so successful thus far that we plan to continue it as a permanent part of our work. In spite of the challenges, our AGC Meridian team maintained a commitment to our core mission, so much so that we were recognized by the Mississippi State University Center for Community-Engaged Learning with the Scholarship of Engagement Award. This award recognized excellence in community-engaged partnerships.

It is with mixed emotions that I must report that Clair Huff has retired from her role as district arts coordinator with the Meridian Public School District. She has been a champion for our children, teachers, and the arts! She will be greatly missed, but we will continue to collaborate with her as she pursues a new role at the Mississippi Children's Museum. I also want to formally welcome Tracy Scott to the role of district arts coordinator. She has been fantastic! Congratulations to both ladies!

Jeff Leffler, Ph.D.

Liaison to the John F. Kennedy Center for the Performing Arts
Any Given Child Meridian



OVERVIEW

Introduction

The Any Given Child Initiative, administered by the Kennedy Center and implemented through many dedicated partners, continues to impact the learners across the district, and even state, with arts integration professional development, and arts experiences for students prekindergarten through 8th grade.

Mission

Any Given Child ensures full access to and equity in arts education programs and resources for K-8 students.

Vision

We commit to engage all Meridian Public Schools to join the community in a unique creative culture, integrating the arts to inspire and enhance learning for all Pre-kindergarten through 8th grade.

Goals

Expand and sustain arts education for all students through integration of the arts across academic disciplines & more direct arts instruction in art forms.

Continue to raise funds to sustain arts education in Meridian.

Sequentially build the integration of the arts through professional development of school personnel, artists, and arts organizations.

Offer free arts education field trips and experiences to every student in every Pre-K-8th grade.



TIMELINE

Kennedy Center Program Process & Timeline

Through the application procedure, the Any Given Child site demonstrates support from the school district Superintendent, the Mayor or other senior government official, and a local arts organization leader. This cross-sector community commitment provides a foundation for the initiative's three phases.

Phase One: Strategic Planning (Year 1)

Guided by a Kennedy Center consulting team, community leaders participate in a strategic planning process that includes visioning, goal-setting, and development of surveys to determine the current status of arts education and to identify where gaps exist in programs and resources. At the end of this Phase, the survey findings, along with long-range goals and action steps, are announced at a public event and documented in a report. The Kennedy Center consulting team offers additional technical assistance by phone/email and provides select resources.

Phase Two: Implementation (Years 2, 3, and 4)

Guided by an Implementation Committee, the community puts the strategic plan into action. The Implementation Committee is responsible for ensuring funding for program activities, as well as overseeing communications and marketing. The Kennedy Center consulting team visits the site on a limited basis, offers technical assistance by phone/email as needed, and provides select resources.

Phase Three: Sustaining (Year 5 and beyond)

The community sustains and expands arts education offerings and continues to ensure funding and staffing for program initiatives, communications, and marketing. During this Phase, Kennedy Center staff visit the site on a limited basis, offer technical assistance by phone/email as needed, and provide support for select resources. This Phase has no end date.

All Phases

While the Kennedy Center leverages existing resources and connections to assist the community in improving access to arts education, all fundraising, grant-writing, and budget activities related to the initiative are the community's responsibility.



Phase Two (Years 2-4)

During this three-year Phase, the community designates a Coordinating Organization to provide administrative support for the initiative's implementation.

The Implementation Committee, working with the Coordinator, provides direction and support to ensure the community's Action Plan is realized. The Committee may establish subcommittees to lead activities in the areas of programming, communications and marketing, fundraising, etc., to support specific implementation tasks.

Additionally, the Implementation Committee completes an Annual Report that documents accomplishments achieved each year, and annually updates and submits their Action Plan to the Kennedy Center.

Throughout this Phase, the Kennedy Center's participation continues, and the Coordinator communicates regularly with the Kennedy Center consulting team.

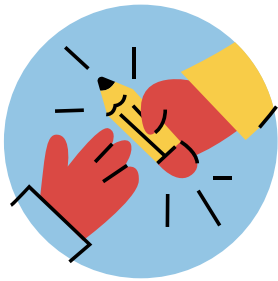
The Implementation Committee begins its tenure during Phase Two. It may be the same group of members as the Community Arts Team (CAT), but often includes new representation.

Most communities invite high-level decision makers to serve on this committee, which ensures that the CAT's long-range plan is resourced and carried out. The Implementation Committee is responsible for staffing, funding, programs, communications, and marketing.



ACCOMPLISHMENTS

AGC served:



285 Teachers



3,713 Students



11 Title I Schools



22 Administrators



ACCOMPLISHMENTS

Accountability Data

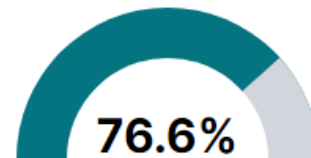
The Mississippi Statewide Accountability System is a single “A” through “F” school and district accountability system. Click any chart to get detailed information on the measure.



COVID-19 and 2019-2020 Data

Due to the impact of COVID-19 on school closures in the 2019-20 school year and a waiver from the U.S. Department of Education, the Mississippi Department of Education (MDE) has no assessment and accountability data to report for the 2019-20 school year.

Graduation Rate



Percentage of students who graduated within four years.

According to the Mississippi Department of Education, **Graduation rates increased by 3.5%** for Meridian Public School District



ACCOMPLISHMENTS

**For the first time since 2015,
there are no failing schools in
the district.***

2018-2019 SCHOOL YEAR

80% of our schools grew in points from last year

**Parkview increased their performance from last year by
114 points (triple-digit gains)**

60% of our schools increased their points by double-digits

**Carver and Parkview increased in six (6) of the seven (7)
areas in the accountability model**

**Oakland Heights, T. J. Harris, and Northwest increased in
five (5) of the seven (7) areas in the model**

80% of our schools increased in Reading Proficiency

90% of our schools increased in Math growth

**207 point increase on the Kindergarten Readiness
Assessment**

*Data from 2019 Status Report



MAPE
MISSISSIPPI ASSOCIATION OF
PARTNERS
IN EDUCATION

**GOVERNOR'S AWARD OF DISTINCTION
FOR COMMUNITY PARTNERSHIPS, 2020**



**MSU CENTER FOR COMMUNITY-ENGAGED
LEARNING AWARD, 2020**



2019-2020 PROGRAMS

100 science and art integrated lesson plans created by MPSD teachers.

28 educators and 11 administrators attended Arts Integration Professional Development Day at The MAX.

Meridian Council for the arts provided funds to create arts supply packs for students learning from home.

Keyboard labs in all 3 MPSD Middle Schools.

Meridian Museum of Art and Meridian Housing Authority partnered for Wednesday Art Camp for students learning from home.

AGC Mini-Grants were awarded to 7 schools.

Any Given Child Inaugural Cohort began Spring 2021.

489 3rd Graders visited Meridian Museum of Art to tour the museum and engage in an arts experience based on Edgar Parker's book illustrations.



2021-2022 ANY GIVEN CHILD ARTS EXPERIENCES

Prekindergarten

Dramatic Play Centers (Curriculum, professional development, and Materials)

Kindergarten

Don't Let the Pigeon Drive the Bus

First Grade

MCM-Meridian

Second grade

MCM-Meridian

Third Grade

School House Rock Live

Fourth Grade

The MAX

Fifth Grade

Link Up

Sixth Grade

Symphony or MSURC Show

Seventh Grade

Meridian Museum of Art

Eighth Grade

The MAX

AP English

MSURC Show



2021-2022 PROFESSIONAL DEVELOPMENT

Partners in Education

Any Given Child currently partners with MSU-Meridian, Lauderdale County School District, and Meridian Public School district to participate in our regional PArtners in Education team. The Partners in Education program of the John F. Kennedy Center for the Performing Arts is designed to assist arts organizations throughout the nation to develop or expand educational partnerships with their local school systems. The primary purpose of these partnerships is to provide professional learning in the arts for teachers. In 1992, this program was awarded the Association of Performing Arts Presenters' Dawson Award, which recognizes innovative and successful projects.

Mississippi Whole Schools

Mississippi Whole Schools, a program of the Mississippi Arts Commission, is Mississippi's first comprehensive statewide arts education program, which uses the arts as a vehicle for promoting high-quality instruction and learning for students in all disciplines. In 1991, WS began as a response to "back to basics" school reform and calls for the integration of the arts into daily classroom instruction and sequential, comprehensive instruction in dance, theatre, visual arts, and music.

Arts Integration Day

Any Given Child has partnered with The MAX to provide educators a professional development day dedicated to integrating the four major art forms into their curriculum. Presenters have included Katie Hugley from the Grammy Museum, Julie Hammond, and Kinetic Etchings.

Any Given Child Cohort

The Cohort consists of 24 MPSD teachers from all schools and varying in grade bands, subjects, and tenure as teachers participate in a 6 session professional development program to hone their arts integration skills. Educators are compensated for their time, given a materials fund, and 1.2 CEU's.

Arts Integrated Graduate Study

Any Given Child and MSU-Meridian are developing an advanced track for professional development that will assist teachers financially to earn their Elementary Education Masters with a focus on arts integration.



NEW ADDITIONS TO OUR ARTS INTEGRATED PROGRAMMING

Scaffolded Professional Development

MPSD educators will be introduced to Arts Integration through the *Arts Integration Day* at The MAX, then invited to advance into our 6 session *Arts Integrated Cohort* training program, and ultimately be invited to enroll in *MSU-Meridian's Elementary Education Masters* program with Arts Integrated focus.

Collective Impact Planning

Any Given Child will spend the next year investigating stronger partnerships with the Mississippi Arts Commission's Mississippi Whole Schools Program as well as the feasibility of an arts magnet school for Meridian Public School District.

Pre-Kindergarten Dramatic Play Centers

Any Given Child will be directing a federally funded project to bring dramatic play centers to all prekindergarten classrooms. This will include developing a curriculum, designing the centers, and training the educators.

Partnership with Mississippi Children's Museum-Meridian

Any Given Child looks forward to working with MCM-Meridian to provide our K-8th grade students access to the museum and companion curriculum.

MMA/MHA Art Camp Partnership

Any Given Child, Meridian Museum of Art, and Meridian Housing Authority will continue partnering for arts experiences at the various housing communities where some of our students reside.



COMMUNITY ARTS TEAM

Dr. Amy Carter, Superintendent
MPSD

Lloyd Gray, Executive Director
Phil Hardin Foundation

Dr. Daniel Barnard, Executive
Director, MSU Riley Center

Percy Bland, Mayor City of
Meridian

Veldore Young-Graham, Judge
City of Meridian

Leslie Lee
Teaching Artist

Dr. Jeffrey Leffler, Assistant
Professor, MSU & Any Given
Child Liaison

Matt Davis, Communications
Director MPSD

Annie B. McKee
Teaching Artist

Dr. Meghan Millea, Professor
East Carolina University

Clair Huff, Mississippi Children's
Museum-Meridian

Liz Wilson, Executive Director
MCM Meridian

Dr. Charlotte Young, Assistant
Superintendent MPSD

Tiffany McGehee, Outreach
Director MSU Riley Center

LouAnn Lamar
Educator

Becky Farley, Executive Director
The Riley Foundation

Dr. Charlotte Tabereaux,
Assistant Professor, UWA

Tony Pompelia, President
Leading Edges

Heather LaCoste, Educator
LCSD

Laura Carmichael, Community
Development Director, City of
Meridian

The Rev. Austin McGehee,
Rector
St. Paul's Episcopal Church

Dr. Terry D. Cruse, Associate
Vice President and Head of
Campus, MSU Meridian

Dr. Rosalind Operton, Assistant
Clinical Professor MSU Meridian

Candice Wade, Youth Educator
Mississippi's Arts +
Entertainment Experience

Sharon Pratt, Board Member
Mississippi Opera Board

LaVonda Germany, Elementary
Curriculum Director, MPSD

Theresa Gonzales,
Parent MPSD

Kris Gianokas, Board Member
Stage Two Youth Theatre

Kate Cherry, Executive Director,
Meridian Museum of Art

Lisa Sollie, Project Coordinator
MSU Meridian

Betty Lou Jones, Board Member
Mississippi Humanities Council

Marsha Iverson
Teaching Artist

Emily McMillan, Project
Coordinator MSU Meridian

Susie Johnson, Arts & Letters
Director, MCC

Dr. Penny Wallin, Professor MSU
Meridian

K. Dustin Markham, Attorney
Barry, Thaggard, May and
Bailey, LLP

Dr. Tracy Jackson, Principal,
Parkview Elementary

Marquita McIntosh, MPSD
Parent

Kasey Mosley, Educator,
Mississippi Arts + Entertainment
Experiences

THANK YOU!



\$100,000+

The Phil Hardin Foundation

\$25,000 +

Broadhead Foundation
W TOK (Inkind)
The Riley Foundation

\$15,000 +

City of Meridian

\$5,000-\$14,999

Mississippi Humanities Council
Meridian Council for the Arts

\$1,000-\$4,999

East Mississippi Community Foundation
Mississippi Arts Commission
Kennedy Center
Greater Meridian Health Clinic
Structural Steel

\$500-\$999

Community Bank
Rotary of Meridian

\$25-\$499

Tim and Linda Allred
McArthur Chiropractic
Business Technology Group
Pigford and Corey
Little Caesars Pizza
Ledbetter Forestry
Saki Sushi
Gloria's Tax Service
Rosenbaum Properties
Cater's Market
Scaggs Family

In Kind Giving

Leading Edges
Mississippi's Arts + Entertainment Experience
Meridian Public School District
Mississippi State University Meridian
MSU Riley Center
Specialty Roll
W TOK
Safeguard Dement



COMMUNITY PARTNERS

